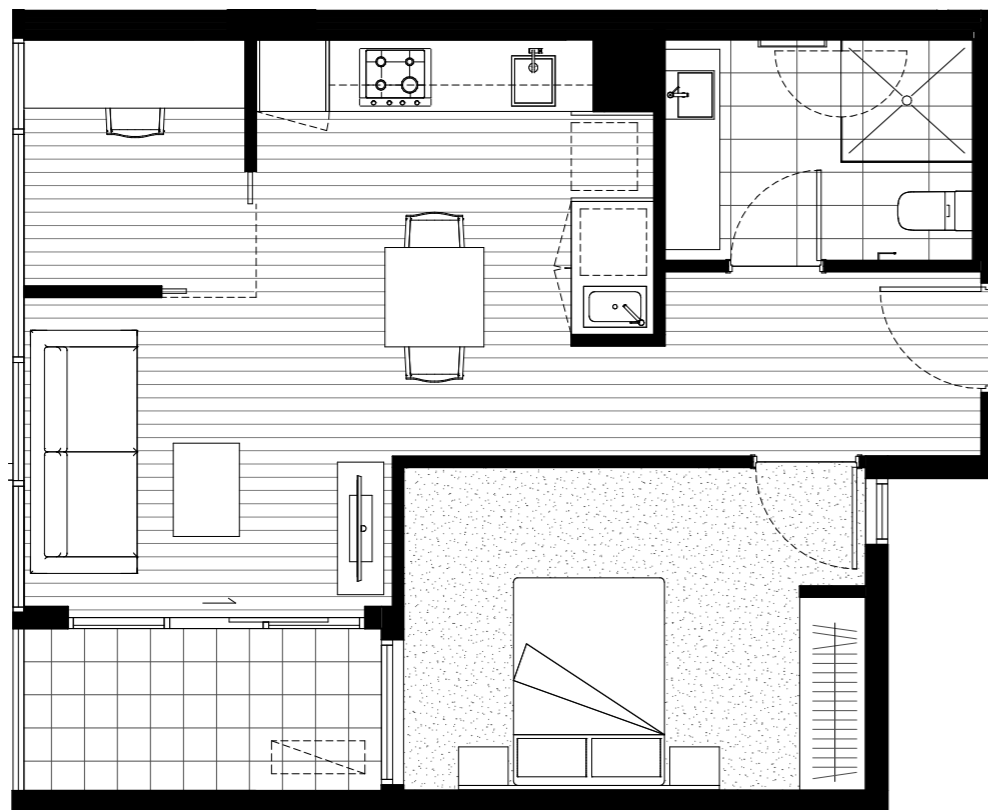


APARTMENT

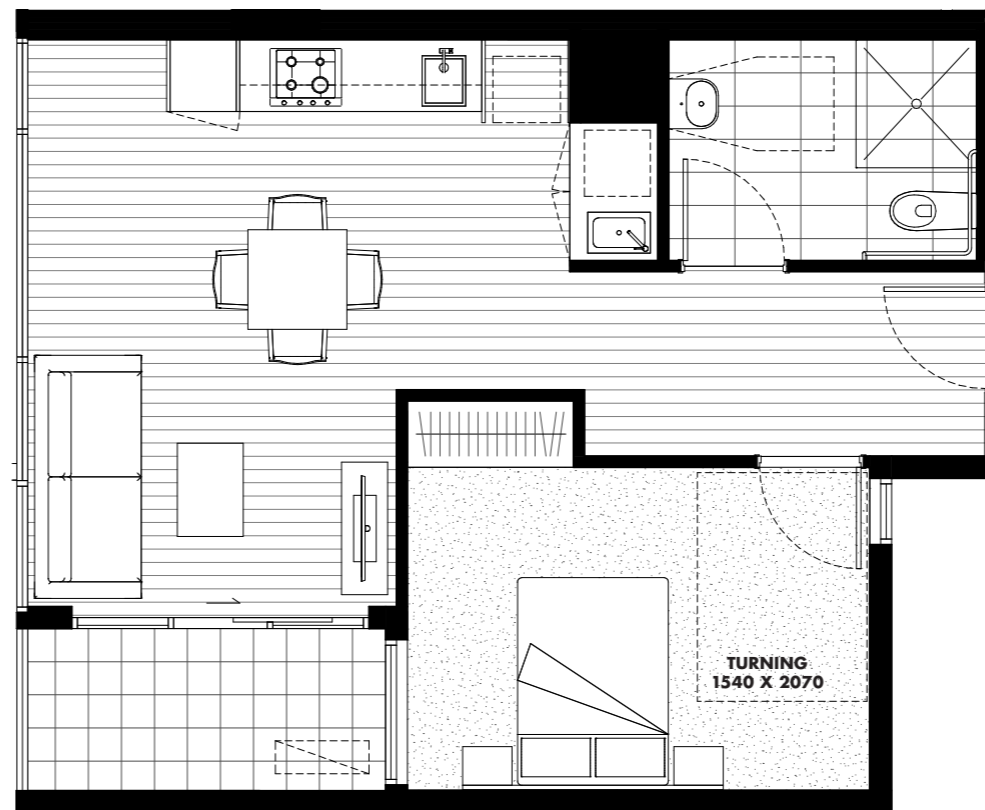
1.23 3.23 6.19
2.23 4.23

Bedrooms	01
Bathrooms	01
Study	01

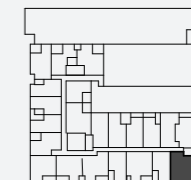
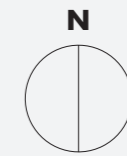
Apartment area	55.8m ²
Terrace area	5.7m ²
<i>Total area</i>	<i>61.5m²</i>



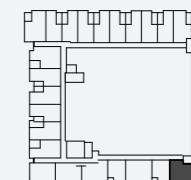
STANDARD APARTMENT



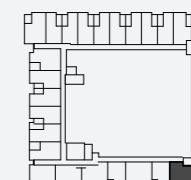
ADAPTABLE APARTMENT



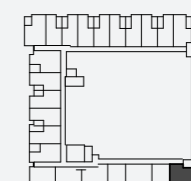
LEVEL 6



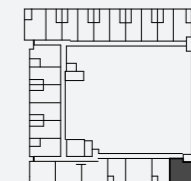
LEVEL 4



LEVEL 3



LEVEL 2



LEVEL 1

These plans are intended as a guide only. The dimensions and areas are approximate only and may not accurately represent the actual dimensions and areas of the apartments or the spaces within them and are subject to change without notice. In addition, locations of utilities may vary during construction and fittings and fixtures on these plans are for illustrative purposes only. The areas are generally measured in accordance with the Property Council of Australia method of measurement. Prospective purchasers must rely on their own VVV and should refer to the Contract of Sale and its schedules for all matters to be included in the purchase price of the apartment, including plans, finishes, fixtures, fittings, appliances and other particulars of sale. Loose furniture and planters are not included. Extent of floor finishes may vary. External space and landscaping indicative only. Refer to level plans for further information.