

DENMÅRK

KEW



THE BEST
OF INNER
CITY LIVING

/
DENMÅRK
KEW

It's simple. Kew draws everyone because it has everything. The suburb continues to be one of Melbourne's most sought-after, as families and established professionals aim to enter its realm and add to its already progressive community. Kew is culturally rich, abundant with services, destination dining spots and some of Melbourne's finest educational institutions.

The amenities in Denmark's vicinity strongly advocate leisure and the locals' collective love for relaxed living. Who wouldn't want to meander through one of the suburb's serene parks or set out on a rowboat ride on Kew's slice of the Yarra at Studley Park?

I.
LOCATION
/
PRIME
POSITION

LOCATION

ROYAL BOTANIC
GARDENS

MELBOURNE
SPORTS PRECINCT

MELBOURNE
CBD (5KM)

UNIVERSITY
OF MELBOURNE

VICTORIA GARDENS
SHOPPING CENTRE

ABBOTSFORD
CONVENT

STUDLEY PARK

COLLINGWOOD
CHILDREN'S
FARM

YARRA BEND
GOLF COURSE

DENMARK

KEW

KEW
JUNCTION

XAVIER COLLEGE

ALEXANDRA
GARDENS

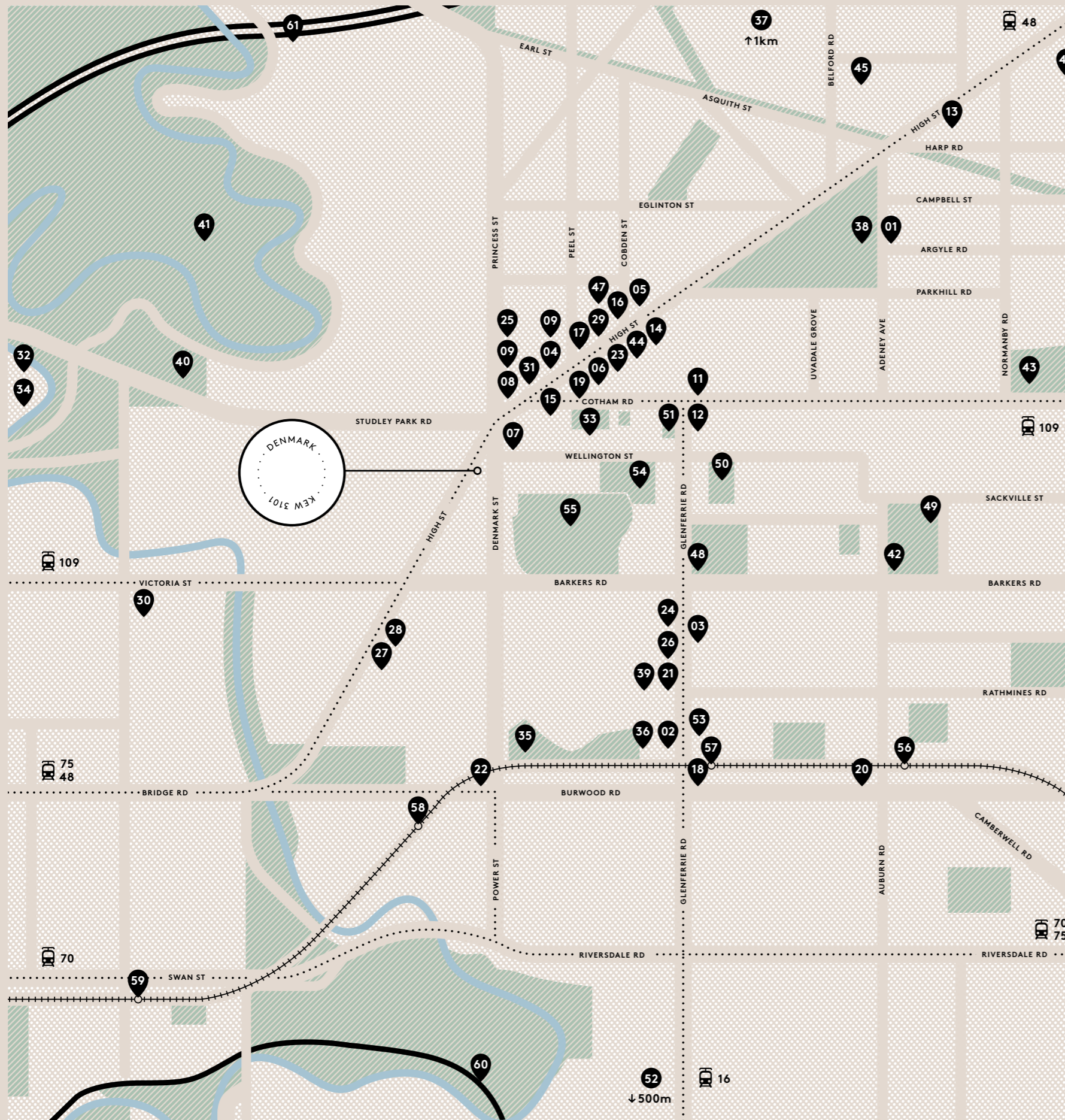
TRINITY GRAMMAR
SCHOOL



LOCATION



LOCATION



I. CASUAL

- 01 Adeney Milk Bar
- 02 Fonda
- 03 Izakaya Jiro
- 04 La Q
- 05 Manfred Cucina
- 06 Now and Then
- 07 Percy's Aeroplane
- 08 Six Slices Pizza Bar
- 09 V Series
- 10 Via Verona

II. CELEBRATE

- 11 Centonove
- 12 Cru
- 13 Di Palma's
- 14 Estivo
- 15 Hellenic Republic
- 16 Mister Bianco
- 17 Pinocchio
- 18 Quinti
- 19 QPO
- 20 Tinto
- 21 Vaporetto

III. LOCALS

- 22 Cannings Butchers
- 23 Dandelion Florist
- 24 Hokey Curator
- 25 Leo's Fine Food
- 26 Readings
- 27 The Common Good
- 28 The Woodfolk
- 29 Toscano's
- 30 Victoria Gardens Shopping Centre
- 31 Woodfrog Bakery

IV. RECREATION

- 32 Abbotsford Convent
- 33 Alexandra Gardens
- 34 Collingwood Children's Farm
- 35 Grace Park
- 36 Hawthorn Leisure Centre
- 37 Kew Golf Club
- 38 Kew Tennis Club
- 39 Lido Cinemas
- 40 Studley Park
- 41 Yarra Bend Golf Course

V. EDUCATION

- 42 Carey Baptist Grammar
- 43 Genazzano FCJ College
- 44 Jon Carnegie School
- 45 Kew East Primary School
- 46 Kew High School
- 47 Kew Primary School
- 48 Methodist Ladies' College
- 49 Preshil The Margaret Lytle Memorial School
- 50 Ruyton Girls' School
- 51 Sacred Heart Primary School
- 52 Scotch College
- 53 Swinburne University
- 54 Trinity Grammar School
- 55 Xavier College

VI. TRANSIT

- 56 Auburn Station
- 57 Glenferrie Station
- 58 Hawthorn Station
- 59 Burnley Station
- 60 Monash Freeway
- 61 Eastern Freeway

LEGEND

- Tram route
- Tram line
- Train line



II.
ARCHITECTURE
/
FORM MEETS
FUNCTION

Denmark's architecture descends from Nordic design characterised by simplicity, minimalism and functionality. Facades and interiors highlight the iconic Scandinavian materials of blonde timber and natural stone, pairing them with contrasting black elements to create a premium residential feel that is both inviting and timeless.





















III.
LIFESTYLE
/
LOCAL
LUXURIES

Kew epitomises fine living with its sheer abundance of amenities and services. Restaurants to satisfy all tastes are peppered along Kew's cultural epicentre, High Street, sitting beside idyllic green spaces, an esteemed society of educational institutions and an enviable collection of public transport services. Seize the best parts of Kew and live well at Denmark.



*Sicilian food is
reimagined among
hospitable interiors
at MISTER BIANCO.*



LIFESTYLE



The 'World's Best Pizza' is found right here in Kew at SIX SLICES.

George Calombaris' Greek restaurant, HELLENIC REPUBLIC, is found in the junction, elevating classic dishes with contemporary elements.



LIFESTYLE

*Find all things designer, Australian and international, at **OSCAR & WILD**.*



*Heralded as one of Melbourne's finest fruit and vegetable purveyors, **TOSCANO'S** is the ultimate one-stop grocery shop.*



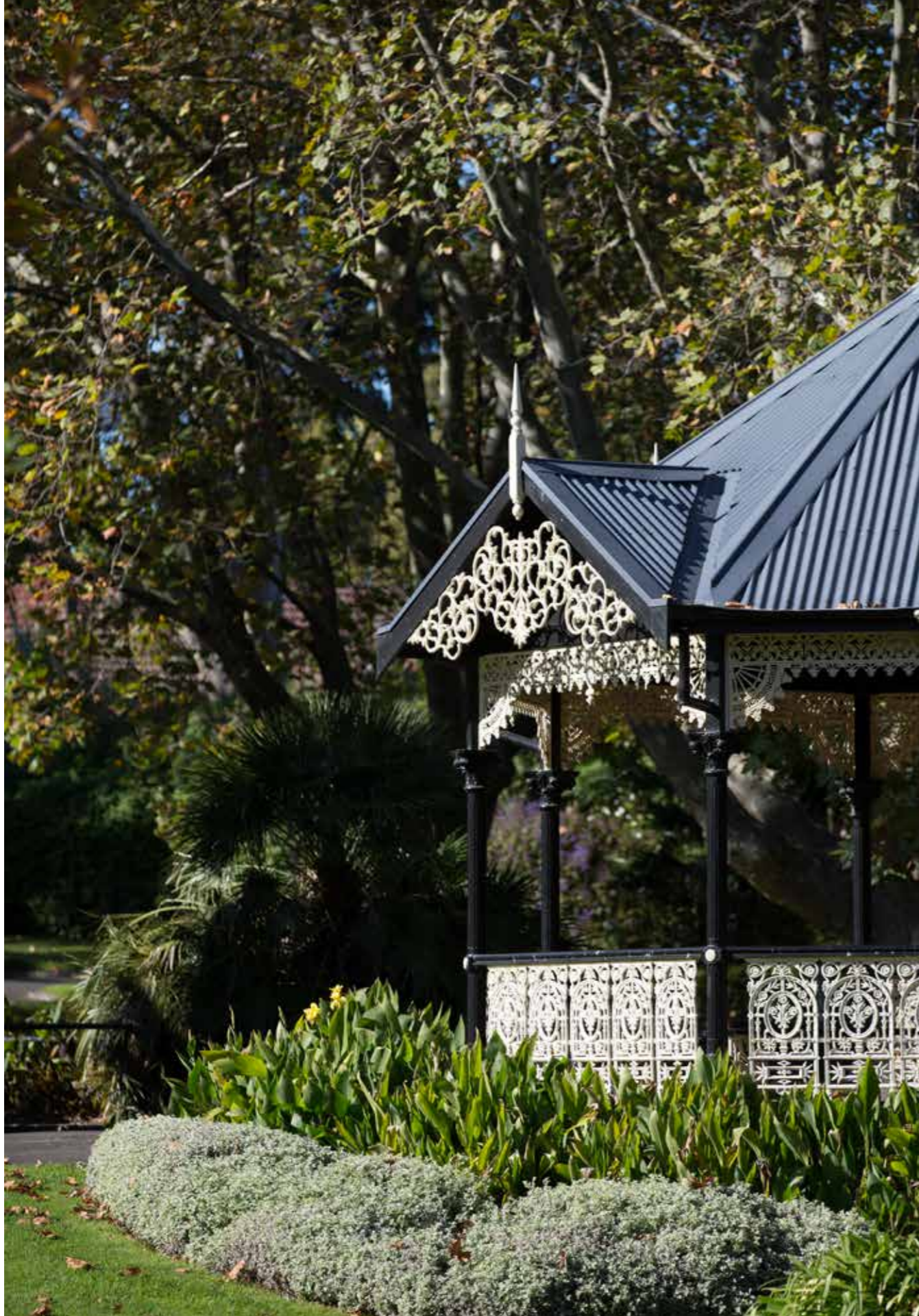
*For flawlessly arranged bouquets – head to Kew Junction's **DANDELION FLORAL**.*



THE WOODSFOLK hosts a global collection of stationery, gifts, homewares, accessories art and more.



*Racks filled with feminine and edgy women's fashion, **HOKEY CURATOR** draws from a plethora of designers including Karen Walker, Antipodium and Romance Was Born.*



*Hop onto one of the city's most adventurous tracks – the **CAPITAL CITY TRAIL** – easily accessible via **YARRA BEND PARK**. There are plenty of prime spots for a weekend picnic, or child-friendly catch-ups, including the **COLLINGWOOD CHILDREN'S FARM**.*



LIFESTYLE

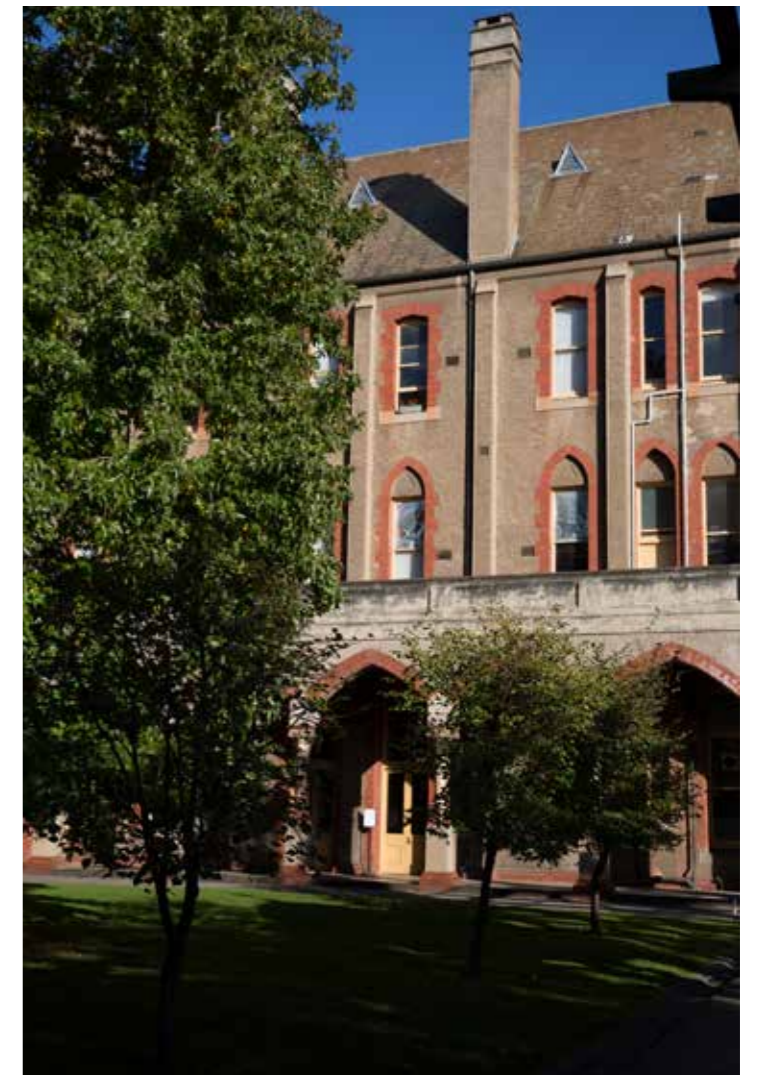


ALEXANDRA GARDENS provides an inner city retreat – made up of large lawns, grand trees, a pond and barbecues – perfect for those celebrations out in the sun.



Get up close and personal with the furry friends at the **COLLINGWOOD CHILDREN'S FARM** – donkeys, horses, cows and goats are found around the premises.

A gathering spot; a collection of historical buildings; a cluster of gardens; a champion of art – **ABBOTSFORD CONVENT** is all of these, making it one of Melbourne's leading cultural destinations.



STUDLEY PARK is encompassed by the Bushland Circuit Trail – an 850 metre loop which attracts runners and brisk walkers. A white-plumped honeyeater or cuckoo shrike may catch your eye, making you feel even further away from the city than you actually are.



LIFESTYLE

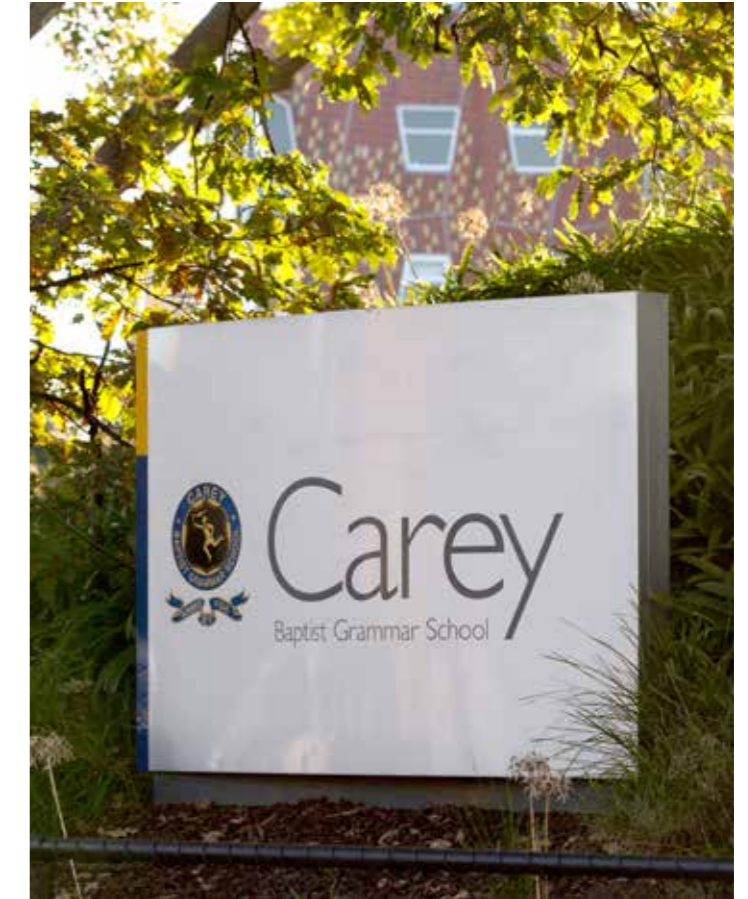


Kew's amenities strongly advocate leisure and the locals' collective love for relaxed living.



LIFESTYLE

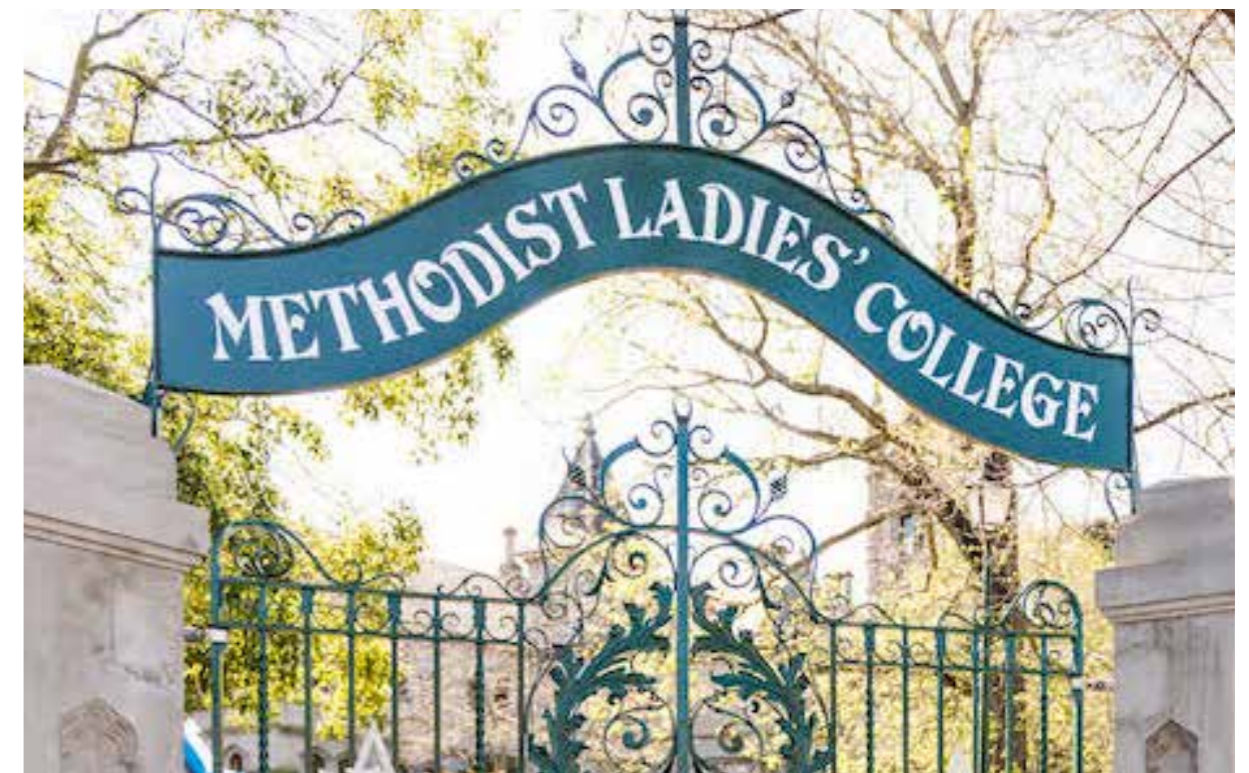
*Denmark is in zone for **KEW HIGH SCHOOL**, one of the best public schools in the state.*



*A respected society of schools is found in Kew, including the consistently well-performing **CAREY GRAMMAR SCHOOL**, **GENAZZANO FCJ COLLEGE**, **RUYTON GIRLS' SCHOOL**, and **METHODIST LADIES' COLLEGE**.*



*Challenging its students to pursue excellence in all things within and beyond the classroom, **XAVIER COLLEGE** is one of Kew's premier schools.*



IV.
ARCHITECT
/
RESIDENTIAL
SPECIALIST

ARCHITECT



IRIS RESIDENCES, *Glen Iris*

Chandler Architecture is a design studio based in North Fitzroy, Victoria. The architecture and interior design firm specialises in boutique residential and commercial projects, offering the expertise that would come from a larger firm with a personal approach and a focus on contemporary living solutions. The studio's design process is driven by a collaborative culture, delivering creative outcomes that meet the needs of individual clients and their visions.

CHANDLER ARCHITECTURE



DAVID CHANDLER
Director

V.
VIEWS
/
ELEVATED
LIVING

EAST VIEW



WEST VIEW



EAST VIEW



WEST VIEW



EAST VIEW



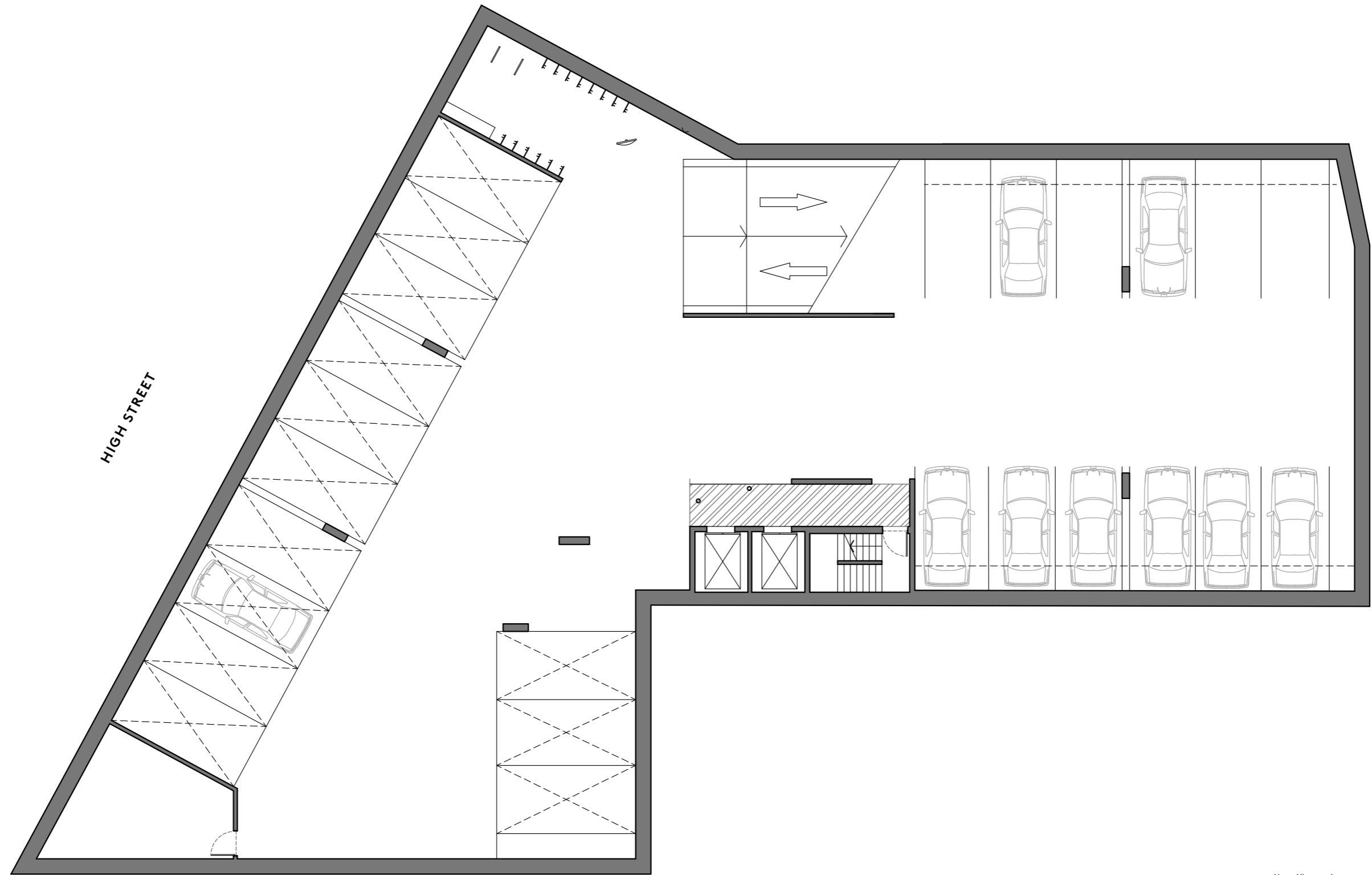
WEST VIEW



VI.
LEVEL PLANS
/
CONTEMPORARY
RESIDENCES

DENMÅRK

KEW



HIGH STREET

DENMARK STREET



Note. All areas shown are approximate. The information contained herein has been obtained from sources we believe to be reliable and therefore have no reason to doubt it's accuracy. The vendor and it's agent will not be responsible for any error or mis-description which may appear. Prospective purchasers or leasees are therefore advised to make whatever investigations they deem necessary.

LEVEL PLAN

LOWER GROUND

DENMÅRK

KEW



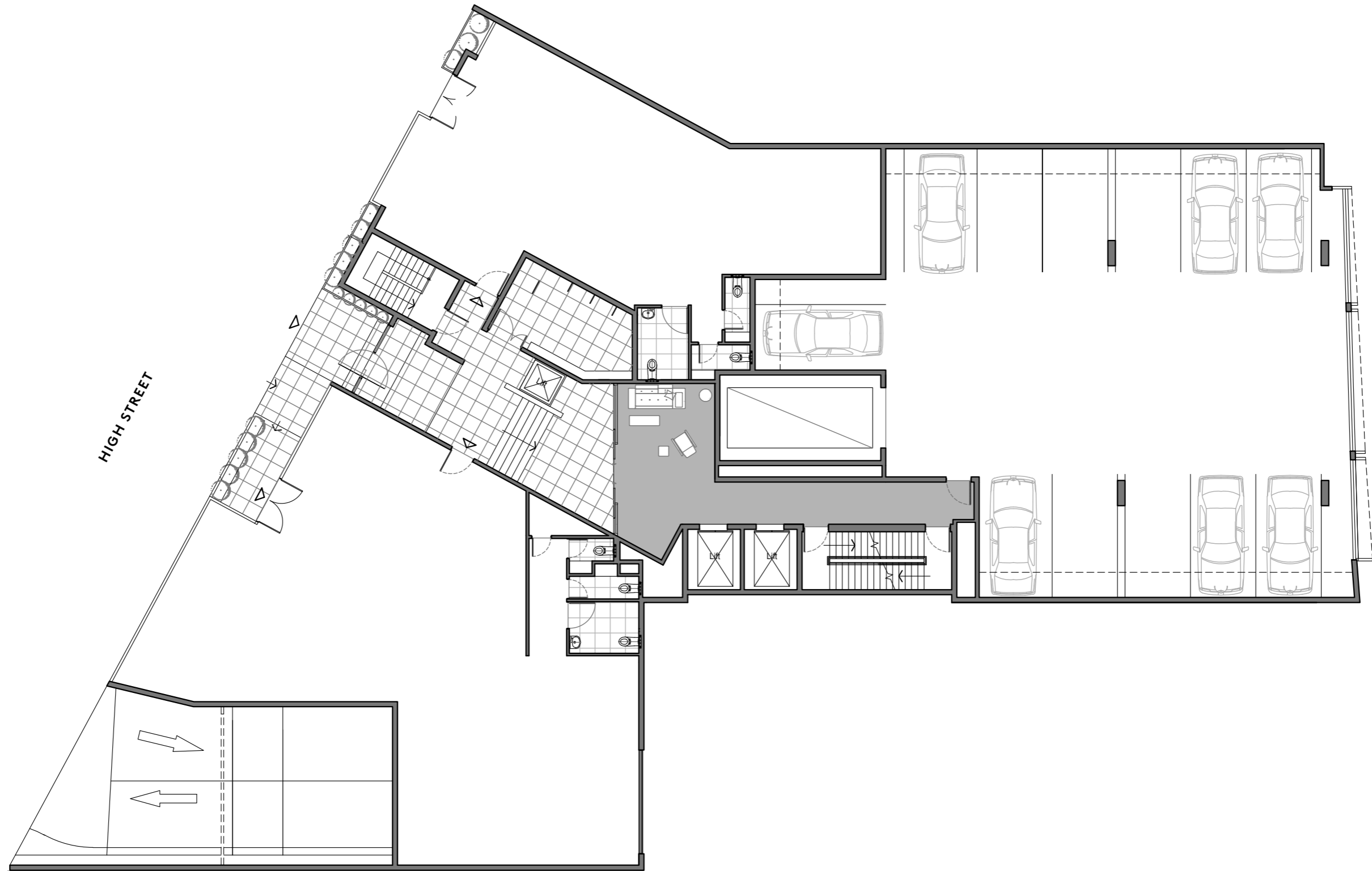
Note. All areas shown are approximate. The information contained herein has been obtained from sources we believe to be reliable and therefore have no reason to doubt its accuracy. The vendor and its agent will not be responsible for any error or mis-description which may appear. Prospective purchasers or leasees are therefore advised to make whatever investigations they deem necessary.

LEVEL PLAN

UPPER GROUND

DENMÅRK

KEW



Note. All areas shown are approximate. The information contained herein has been obtained from sources we believe to be reliable and therefore have no reason to doubt it's accuracy. The vendor and it's agent will not be responsible for any error or mis-description which may appear. Prospective purchasers or leasees are therefore advised to make whatever investigations they deem necessary.



DENMÅRK

KEW



Note. All areas shown are approximate. The information contained herein has been obtained from sources we believe to be reliable and therefore have no reason to doubt it's accuracy. The vendor and it's agent will not be responsible for any error or mis-description which may appear. Prospective purchasers or leasees are therefore advised to make whatever investigations they deem necessary.

DENMÅRK

KEW



Note: All areas shown are approximate. The information contained herein has been obtained from sources we believe to be reliable and therefore have no reason to doubt its accuracy. The vendor and its agent will not be responsible for any error or mis-description which may appear. Prospective purchasers or leasees are therefore advised to make whatever investigations they deem necessary.

DENMÅRK

KEW



DENMARK STREET

HIGH STREET

COURTYARD

STORAGE

STORAGE



Note: All areas shown are approximate. The information contained herein has been obtained from sources we believe to be reliable and therefore have no reason to doubt it's accuracy. The vendor and it's agent will not be responsible for any error or mis-description which may appear. Prospective purchasers or leasees are therefore advised to make whatever investigations they deem necessary.

DENMÅRK

KEW



Note: All areas shown are approximate. The information contained herein has been obtained from sources we believe to be reliable and therefore have no reason to doubt its accuracy. The vendor and its agent will not be responsible for any error or mis-description which may appear. Prospective purchasers or leasees are therefore advised to make whatever investigations they deem necessary.

DENMÅRK

KEW



HIGH STREET

LIGHT COURT

DENMARK STREET



Note: All areas shown are approximate. The information contained herein has been obtained from sources we believe to be reliable and therefore have no reason to doubt it's accuracy. The vendor and it's agent will not be responsible for any error or mis-description which may appear. Prospective purchasers or leasees are therefore advised to make whatever investigations they deem necessary.

DENMÅRK

KEW



Note: All areas shown are approximate. The information contained herein has been obtained from sources we believe to be reliable and therefore have no reason to doubt its accuracy. The vendor and its agent will not be responsible for any error or mis-description which may appear. Prospective purchasers or leasees are therefore advised to make whatever investigations they deem necessary.



DENMÅRK

KEW



Note. All areas shown are approximate. The information contained herein has been obtained from sources we believe to be reliable and therefore have no reason to doubt it's accuracy. The vendor and it's agent will not be responsible for any error or mis-description which may appear. Prospective purchasers or leasees are therefore advised to make whatever investigations they deem necessary.



DENMÅRK

KEW



Note. All areas shown are approximate. The information contained herein has been obtained from sources we believe to be reliable and therefore have no reason to doubt it's accuracy. The vendor and it's agent will not be responsible for any error or mis-description which may appear. Prospective purchasers or leasees are therefore advised to make whatever investigations they deem necessary.

DENMÅRK

KEW



Note: All areas shown are approximate. The information contained herein has been obtained from sources we believe to be reliable and therefore have no reason to doubt its accuracy. The vendor and its agent will not be responsible for any error or mis-description which may appear. Prospective purchasers or leasees are therefore advised to make whatever investigations they deem necessary.



DENMÅRK

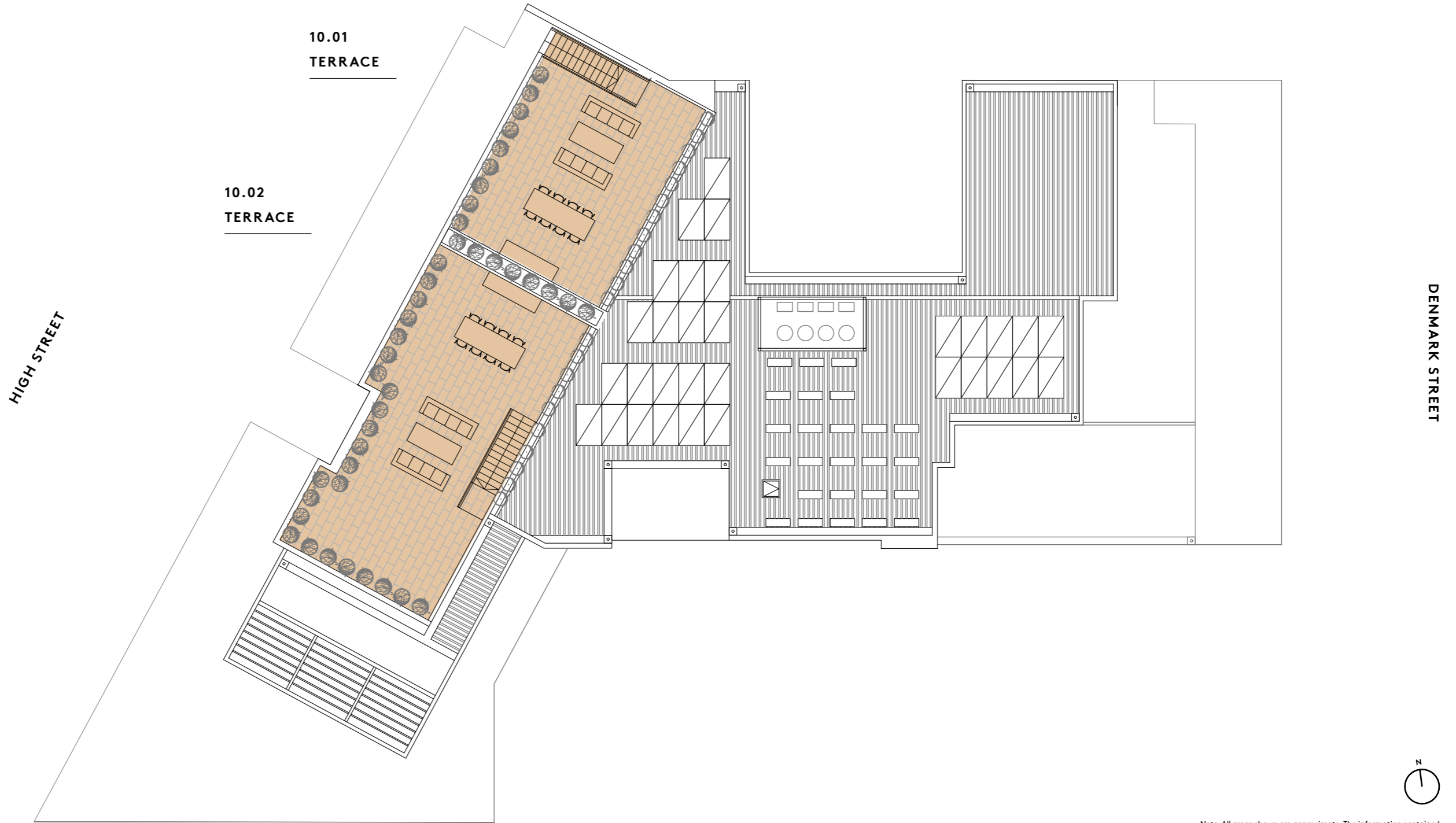
KEW



Note: All areas shown are approximate. The information contained herein has been obtained from sources we believe to be reliable and therefore have no reason to doubt its accuracy. The vendor and its agent will not be responsible for any error or mis-description which may appear. Prospective purchasers or leasees are therefore advised to make whatever investigations they deem necessary.

DENMÅRK

KEW



Note. All areas shown are approximate. The information contained herein has been obtained from sources we believe to be reliable and therefore have no reason to doubt its accuracy. The vendor and its agent will not be responsible for any error or mis-description which may appear. Prospective purchasers or leasees are therefore advised to make whatever investigations they deem necessary.

VIII.
FIXTURES & FINISHES
/
CONSIDERED
ELEMENTS

Bringing Denmark to life is Melbourne-founded firm Chandler Architecture, who has employed an assemblage of sophisticated finishes and high-quality European appliances to create spaces that foster a great sense of comfort and intimacy. Denmark's one, two and three bedroom residences pave a new way for modern, inner city living in one of Melbourne's most celebrated areas.

GENERAL FIXTURES



DOOR HANDLES
Chrome finish
General



JOINERY HANDLES
Chrome finish
Bedroom



DOWN LIGHT
Black finish
General



PENDANT LIGHT
Black finish
Above kitchen island bench



MIXER TAP
Chrome finish
Kitchen



GAS COOKTOP
Black glass finish
Kitchen



KITCHEN SINK
Stainless steel finish
Kitchen

KITCHEN FIXTURES



WALL OVEN
Black glass and stainless steel finish
Kitchen



INTEGRATED FRIDGE
Fridge/freezer combination
Kitchen



RANGEHOOD
Integrated with joinery
Kitchen



DISHWASHER
Fully integrated
Kitchen



RUBBISH BIN
Grey finish
Kitchen



TOILET PAN
Gloss white finish
Bathroom / Ensuite

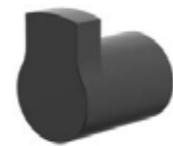


PUSH-PLATE
Black soft touch
Bathroom / Ensuite

BATHROOM FIXTURES



TOILET PAPER HOLDER
Matte black finish
Bathroom / Ensuite



ROBE HOOKS
Matte black finish
Bathroom / Ensuite



TOWEL RAILS
Matte black finish
Bathroom / Ensuite



BASIN
Gloss white finish
Bathroom / Ensuite



SHOWER RAIL AND HEAD
Black / chrome finish
Bathroom / Ensuite



SHOWER MIXER
Matte black finish
Bathroom / Ensuite



BASIN / BATH MIXER
Matte black finish
Bathroom / Ensuite

BATHROOM FIXTURES



SHOWER SHELF
Matte black finish
Bathroom / Ensuite



BATH BACK TO WALL
Free standing
Bathroom / Ensuite



FIRE
Chrome finish
Living / Meals
**Optional Upgrade*

FIXTURES OPTIONAL UPGRADES

GENERAL FINISHES



CARPET FLOORING

Bedroom



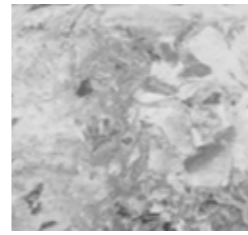
FLOOR AND WALL TILES

Slate natural finish
Bathroom / Ensuite



JOINERY

Colour matched to
kitchen island benchtop
Kitchen island



SPLASHBACK

Kitchen splashback



BENCHTOP

*Kitchen benchtop and
box insert*

LIGHT SCHEME FINISHES



FEATURE WALL MIRROR - GREY SMOKED

Light scheme
Dining



TIMBER FLOORING - SMOKED OAK

Light scheme
Living



JOINERY - WHITE OAK

Light scheme
Bathroom vanity top



JOINERY AND FEATURE WALL - WHITE OAK

Light scheme
*Kitchen / Bathroom / WIR /
Study joinery, Living wall panels*

DARK SCHEME FINISHES



FEATURE WALL MIRROR - SILVER

Dark scheme
Dining



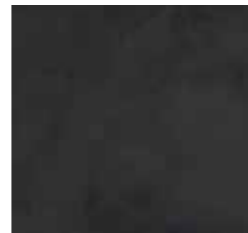
TIMBER FLOORING - WHITE OAK

Dark scheme
Living



JOINERY AND FEATURE WALL - DARK OAK

Dark scheme
*Kitchen / Bathroom / WIR /
Study joinery, Living wall panels*



JOINERY

Dark Scheme. Colour matched to
kitchen island benchtop
Living room

A home for the elegant minded.

DENMARKKEW.COM.AU

112 HIGH STREET, KEW



CREATIVE BY EARL.ST

While all reasonable care has been taken in the preparation of this brochure and the particulars contained herein, it is intended to be a visual aid and does not necessarily depict the finished state of the property or object shown. No liability whatsoever is accepted for any direct or indirect loss or consequential loss or damage arising in any way out of any reliance upon this brochure. Purchasers must rely upon their own enquiries and inspections. Furniture is not included with the property. Dimensions and specifications are subject to change without notice. Illustrations and photographs are for presentation purposes and are to be regarded as indicative only. This brochure does not form part of, and is not, an offer or a contract of sale.

DENMARKKEW.COM.AU